

GLASS

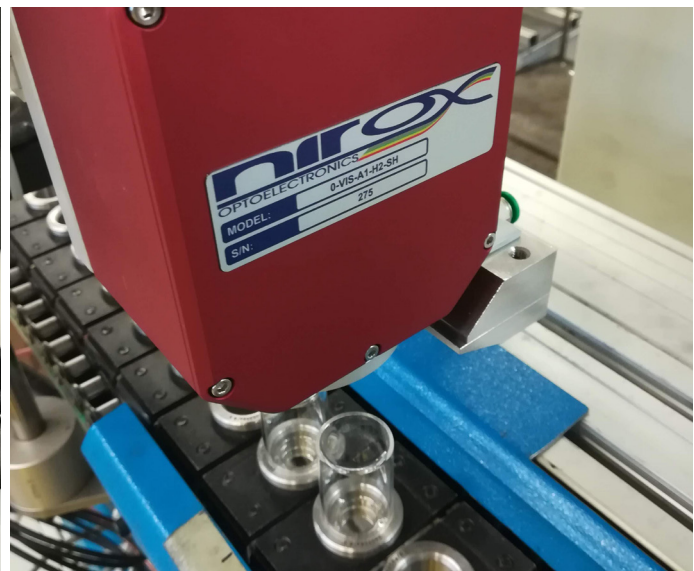
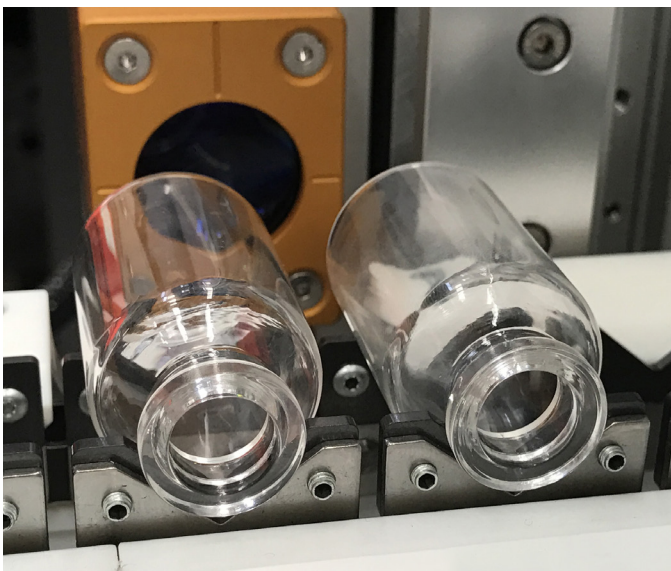
VIALS AND AMPOULES



Glass pharmaceutical primary packaging must be produced under very **tight tolerance**. Dimensions must be 100% inspected to guarantee the **full-functionality of the packaging**. The bottom of the container plays a fundamental part for the integrity of the container during the filling process.

NIROX's glass vials and ampoules measuring systems allow the **in-line measurements** and control, with **micrometric precision** of:

- **bottom thickness**
- **bottom concavity**
- **container length**



The system is fully managed by the **friendly supervisor panel** that shows all the **measurements, time-trend chart** of data and manages **production sorting**.

APPLICATIONS

- **pharmaceutical vials and ampoules**
- **glass containers**
- **available for off-line controls, as well**
- **customized according to specific needs**

ADVANTAGES

- **high accuracy**
- **in-line measurements**
- **no-lift, no-touch and single side measurements**
- **measurements on the fly**, one system serving multiple forming stations
- **synchronization with the line to sort the product out of tolerance**
- **easy to use**
- **quick integration** into production line
- **production reporting**