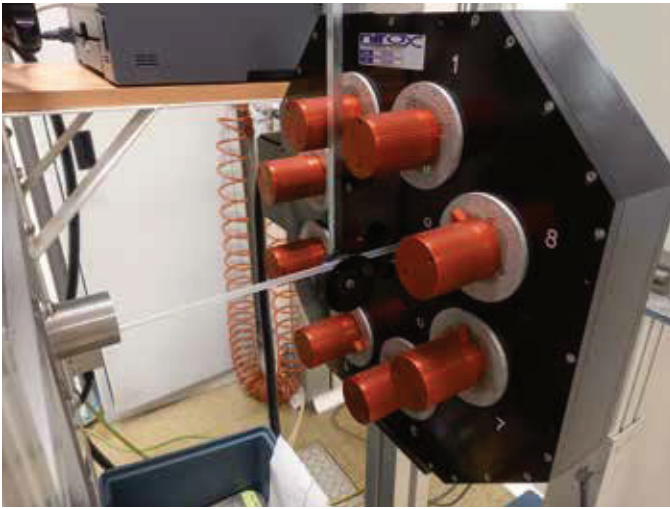


# PLASTIC

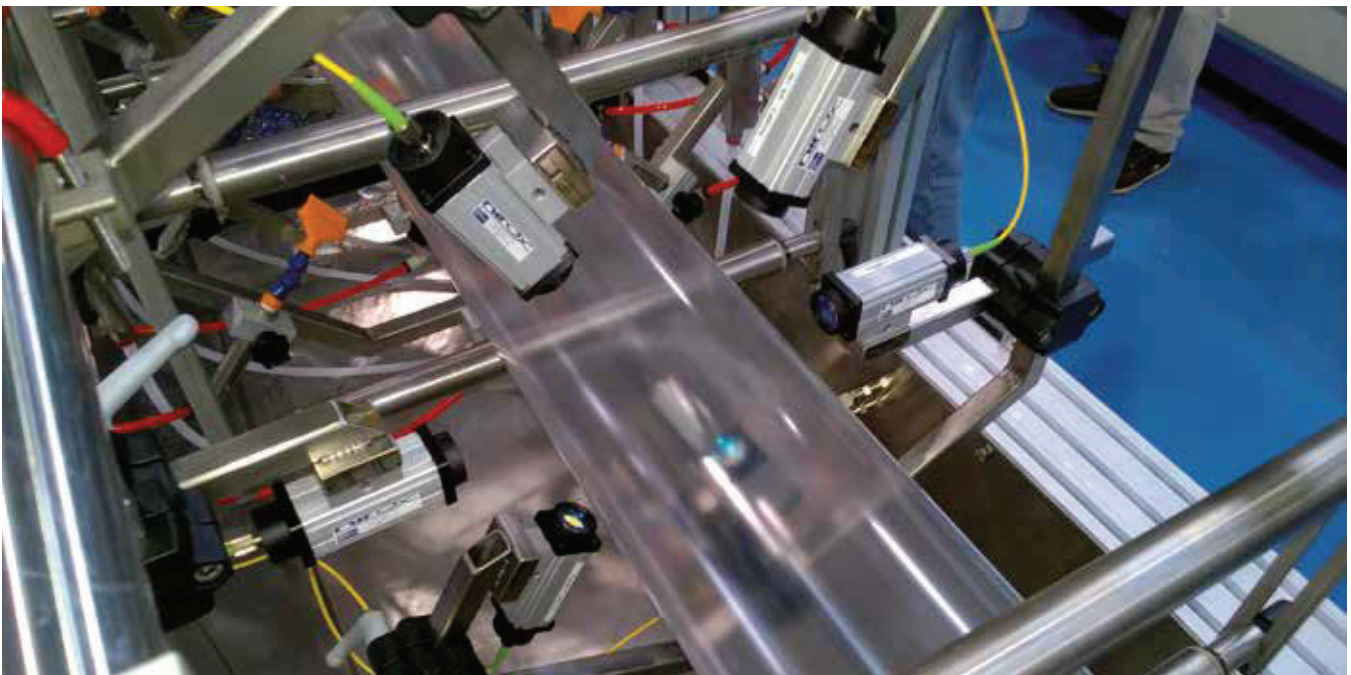
## TUBES AND TUBULARS



**Plastic tube** extrusion demands high **steadiness, quality and traceability** level. Non-uniformity of dimensions is a flaw that can compromise the product quality. We provide in-line measuring systems that measure constantly and with micrometric precision:

- **wall thickness**
- **concentricity**
- **outer diameter**
- **ovality**
- **inner diameter**

with the possibility of **automatic regulation of the extruder.**



## APPLICATIONS

- **extrusion lines of medical tube**
- **production plants of tubular for medical flexible bags**

## ADVANTAGES

- **measuring of every single tube section** at intervals of few millimetres
- **multi-axis thickness and diameter inspection**
- **automatic regulation of the line**
- **easy to use**
- **quick integration** into production line
- **production reporting**