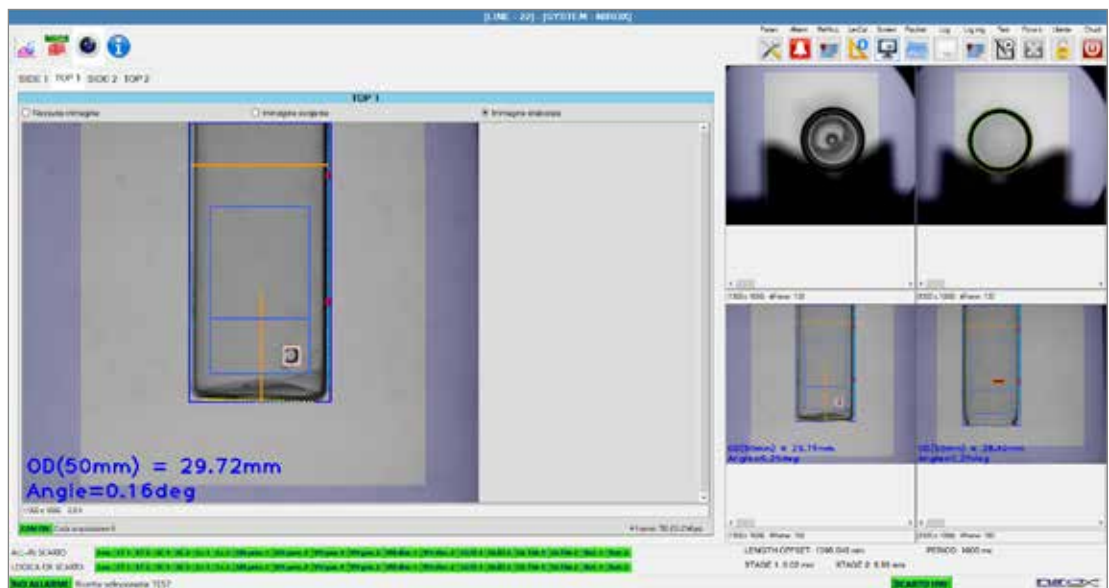


EVline

TUBES - INLINE INSPECTION AFTER GLAZING



EVline is a family of systems designed to inspect glass tubes after the end-forming. Being stand-alone it can be easily mounted, and its modularity allows to integrate several controls in a single inspection station. The camera modules are based on high quality optics for best performances.



Depending on the layout the classified features are:

- end taper
- square-cut
- cracks/defects
- vent-hole
- tube length
- glazing
- bottoming
- bow
- residual stress

ADVANTAGES

- 100% in-line quality inspection
- contact-less, machine vision
- easy set-up
- rejection of bad tubes, before packaging
- statistical analysis of production