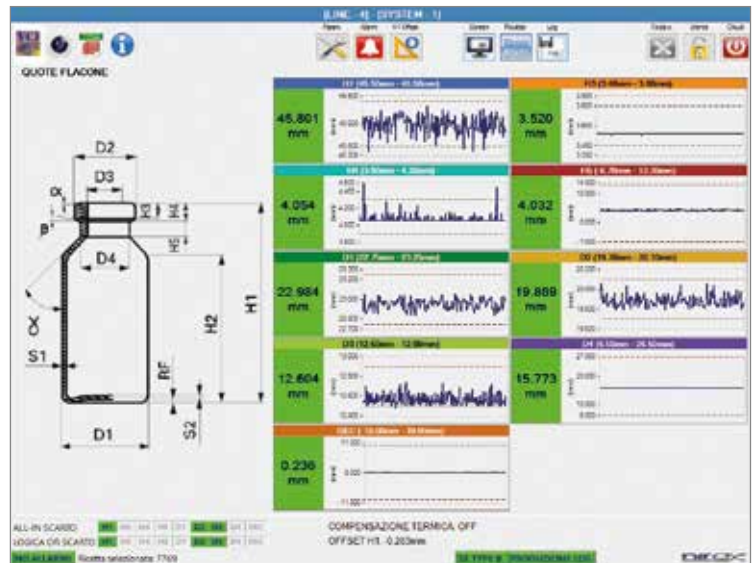


VISline.D

VIALS – DIMENSIONAL INLINE INSPECTION



Visual inspection is nowadays mandatory equipment in a **state-of-the-art tube converting production line**. The **VISline.D family** of camera-based systems has been expanded to cover **all inspection requirements directly on board in production line**.



Dimensional inspection is usually performed **on the forming machine** when container is still mounted in a chuck. After this, there is the inspection before annealing oven, **on the after-forming line**, to **measure inner diameter and length**. Both are available as a **single station**.

ADVANTAGES

- **measurement of outer dimensions, inner diameter and length**
- **contactless, machine vision based**
- **easy set-up and configuration**
- **rejection of bad products**
- **statistical analysis of production**